

AB PROFIT HOGA AUR BHI ZYAADA



TATA
SIGNA
3523.T

TATA TRUCKS
DESH KE TRUCKS

Technical Specifications

| MODEL | TATA LPT 3523 / SIGNA 3523.T |
|----------------------|--|
| GROSS VEHICLE WEIGHT | 35 000 kg |
| ENGINE | TATA CUMMINS ISBe 5.6 OBD-II |
| ENGINE CAPACITY | 5 635 cc |
| MAXIMUM POWER | 169 kW (227 HP) @ 2 300 r/min |
| MAXIMUM TORQUE | 925 Nm @ 1 000 - 1 600 r/min |
| CLUTCH | 395 mm Push Type, Single Plate Dry Friction |
| TRANSMISSION | TATA G950 6-Speed |
| FRONT AXLE | Extra Heavy-Duty Forged 7T i-Beam, Reverse Elliot Type |
| REAR AXLE | RA110HD at RFWD and RA 909 at RRWD |
| FRONT SUSPENSION | Parabolic Leaf Spring |
| REAR SUSPENSION | Bell Crank with Semi-Elliptical Leaf Spring |
| CAB /COWL | Signa Cab / Cowl Option Available |
| TYRES | 295/90R20 LRR Radial Tube Type |
| FUEL TANK | 365L HDPE (Plastic Tank) |
| WHEELBASE OPTIONS | 56 WB 60 WB 68 WB |
| DECK LENGTH OPTIONS | 7 315 mm (24ft) 8 534 mm (28ft) 9 754 mm (32ft) |
| GROUND CLEARANCE | 248 mm |
| CONFIGURATION | 8x2 |
| NO. OF TYRES | 12 Tyres |

KEY FEATURES



Gear Shift Advisor



Auto FE Switch



Cruise Control



Fleetedge Telematics

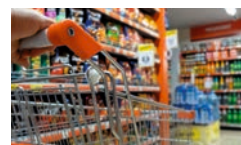


Engine Brake



Tilt and Telescopic Steering

APPLICATIONS



FMCG



Tanker



Parcel



FMCD



Reefer Container



Cement Bags



TATA MOTORS

To know more, visit your nearest Tata Motors dealership

www.trucks.tatamotors.com

☎ 18 00 20 97 979 Follow us on