

AB PROFIT HOGA AUR BHI ZYAADA



TATA
SIGNA
2823.T

TATA TRUCKS
DESH KE TRUCKS

Technical Specifications

MODEL	TATA LPT 2823 / SIGNA 2823.T
GROSS VEHICLE WEIGHT	28 000 kg
ENGINE	TATA CUMMINS ISBe 5.6 OBD-II
ENGINE CAPACITY	5 635 cc
MAXIMUM POWER	169 kW (227 HP) @ 2 300 r/min
MAXIMUM TORQUE	925 Nm @ 1 000 - 1 600 r/min
CLUTCH	395 mm Push Type, Single Plate Dry Friction
TRANSMISSION	TATA G950 and TATA G750 6-Speed
FRONT AXLE	Extra Heavy-Duty Forged 7T i-Beam, Reverse Elliot Type
REAR AXLE	RA110LD at RFWD and RA 909 at RRWD
FRONT SUSPENSION	Parabolic Leaf Spring
REAR SUSPENSION	Bell Crank with Semi-Elliptical Leaf Spring
CAB /COWL	Signa Cab / Cowl Option Available
TYRES	295/90R20 LRR Radial Tube Type
FUEL TANK	365L HDPE (Plastic Tank)
WHEELBASE OPTIONS	48 WB 56 WB 60 WB 68 WB
DECK LENGTH OPTIONS	6 706 mm (22ft) 7 315 mm (24ft) 8 534 mm (28ft) 9 754 mm (32ft)
GROUND CLEARANCE	248 mm
CONFIGURATION	6x2
NO. OF TYRES	10 Tyres

KEY FEATURES



Gear Shift Advisor



Auto FE Switch



Cruise Control



Fleetedge Telematics

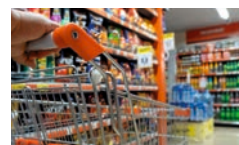


Engine Brake



Tilt and Telescopic Steering

APPLICATIONS



FMCG



FMCD



E-Commerce



Parcel



Industrial Goods



Agricultural Goods



Tanker



Cement Bags



TATA MOTORS

To know more, visit your nearest Tata Motors dealership

www.trucks.tatamotors.com

☎ 18 00 20 97 979 Follow us on