

AB PROFIT HOGA AUR BHI ZYAADA



TATA
SIGNA
2821.T

TURBOTRONN 2.0
BACHAT BHI, BHAROSA BHI

TATA TRUCKS
DESH KE TRUCKS

Technical Specifications

MODEL	TATA LPT 2821 / SIGNA 2821.T
GROSS VEHICLE WEIGHT	28 000 kg
ENGINE	TATA New Gen 5L TurboTronn 2.0
ENGINE CAPACITY	5 005 cc
MAXIMUM POWER	150 kW (204 HP) @ 2 200 r/min
MAXIMUM TORQUE	850 Nm @ 1 000 - 1 600 r/min
CLUTCH	380 mm Push Type, Single Plate Dry Friction
TRANSMISSION	TATA G950 and TATA G750 6-Speed
FRONT AXLE	Extra Heavy-Duty Forged 7T i-Beam, Reverse Elliot Type
REAR AXLE	RA110LD at RFDW and RA 909 at RRWD
FRONT SUSPENSION	Parabolic Leaf Spring
REAR SUSPENSION	Bell Crank with Semi-Elliptical Leaf Spring
CAB /COWL	Signa Cab / Cowl Option Available
TYRES	295/90R20 LRR Radial Tube Type
FUEL TANK	365L HDPE (Plastic Tank)
WHEELBASE OPTIONS	48 WB 56 WB 68 WB
DECK LENGTH OPTIONS	6 706 mm (22ft) 7 315 mm (24ft) 9 754 mm (32ft)
GROUND CLEARANCE	248 mm
CONFIGURATION	6x2
NO. OF TYRES	10 Tyres

KEY FEATURES



Gear Shift Advisor



Auto FE Switch



Cruise Control



Fleetedge Telematics

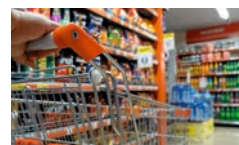


Engine Brake



Tilt and Telescopic Steering

APPLICATIONS



FMCG



FMCD



E-Commerce



Parcel



Industrial Goods



Agricultural Goods



Tanker



Cement Bags



TATA MOTORS

To know more, visit your nearest Tata Motors dealership

www.trucks.tatamotors.com

☎ 18 00 20 97 979 Follow us on